



- **Services**

Emergency garage door repair Garage door opener installation Garage door spring replacement Residential garage door services Commercial garage door repair Garage door cable repair Overhead garage doors maintenance Remote control programming for garage doors Garage door track alignment Broken panel replacement Insulated garage doors installation Annual garage door inspection

- **About Us**

Commercial garage door repair

Overhead Door Company of Joliet

+18157256077

48 Meadow Ave

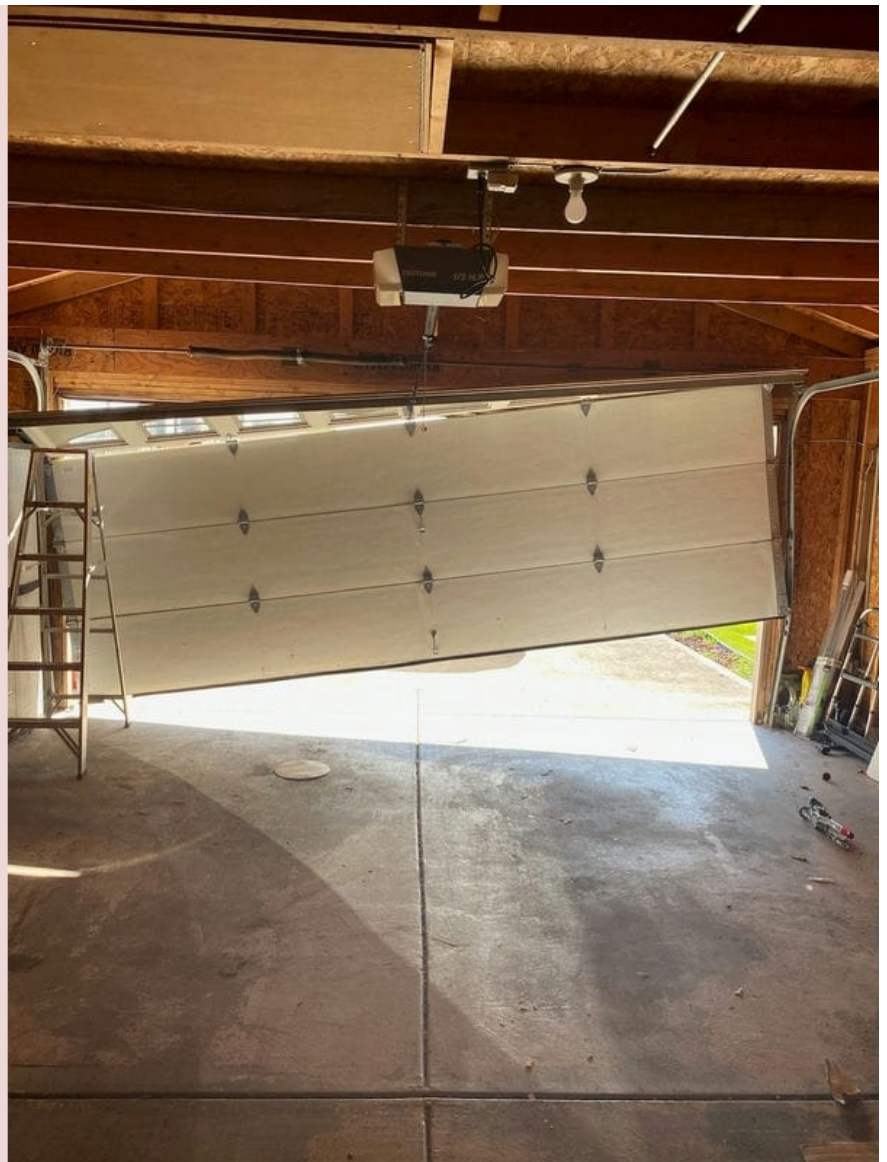
Joliet

60436

<https://objectsstorage.us-chicago-1.oraclecloud.com/n/ax1bjfajf0z/>

[b/corp-investor-news/o/garagedoorrepairnearme/manhattanil/commercial-garage-door-repair.html](https://objectsstorage.us-chicago-1.oraclecloud.com/n/ax1bjfajf0z/b/corp-investor-news/o/garagedoorrepairnearme/manhattanil/commercial-garage-door-repair.html)

al-garage-door-repair.html



and closing action). Secure all moving parts tightly to avoid any loose components that can lead to accidents [Garage door cable repair Flint](#). Always disconnect the electric opener before performing any manual tests [Manhattan garage door service](#) technology. When these springs fail, the door may become difficult or impossible to lift manually or with an opener.

Another common problem is misalignment of the tracks. The metal tracks guide the door smoothly up and down during operation; however, they can be knocked out of alignment by accidental impacts from forklifts or other heavy equipment often found in industrial environments. Misaligned tracks can cause the door to operate unevenly or jam altogether, posing potential safety risks to employees.

Electronic malfunctions also account for a significant number of commercial garage door issues. Modern doors often incorporate complex systems including remote controls, sensors, and automated openers. These electronic components can suffer from various problems such as wiring faults or software glitches. A malfunctioning sensor might prevent a door from closing properly if it incorrectly detects an obstacle in its path.

Weather-related damage cannot be overlooked either. Commercial garage doors are constantly exposed to environmental elements like rain, snow, wind, and extreme temperatures which can lead to rusting of metal parts or warping of panels made from materials like wood or aluminum. Weather seals around the edges of the door may degrade over time allowing water ingress leading potentially to flooding inside business premises.

It's also worth noting that human error plays a role in some common issues faced by commercial garage doors. Improper use or lack of regular maintenance exacerbates existing minor problems into major ones requiring costly repairs.

To mitigate these problems proactively rather than reactively dealing with breakdowns when they occur – businesses should implement routine maintenance schedules carried out by professional technicians specialized in commercial garage door repair services who will inspect all aspects ensuring everything functions optimally replacing any worn-out parts before failure occurs thereby extending overall lifespan reducing downtime saving money long-term investment perspective too!

The Importance of Timely Repairs in Commercial Garage Door Maintenance

In the bustling world of business, efficiency and reliability are hallmarks of success. For companies that rely on commercial garages for daily operations, whether it's a logistics firm with constant inflow and outflow of goods or a maintenance service requiring secure equipment storage, the functionality of their garage doors is paramount.

Commercial garage door repair - wood

1. moisture
2. electrical wiring
3. electrical switch

Therefore, timely repairs to these commercial garage doors are not merely a matter of convenience—they are essential.

First and foremost, safety cannot be compromised. A malfunctioning garage door poses significant hazards to employees, clients, and property. Imagine a scenario where an industrial-sized door suddenly collapses due to neglected wear and tear; the potential for injury or even fatality is real. Additionally, ensuring that these doors function properly can prevent security breaches. A faulty lock mechanism could be an open invitation for theft or vandalism, jeopardizing valuable assets stored within.

Operational efficiency is another critical reason why prompt repairs should never be delayed. In industries where time equates to money—such as delivery services or manufacturing—every minute counts. A stuck or slow-moving door can cause significant delays in operations, leading to cascading effects like missed deadlines and dissatisfied customers. By addressing issues promptly through professional repair services, businesses can maintain seamless operation flow.

Moreover, financial prudence advocates for timely intervention when it comes to commercial garage door repairs. Small problems left unchecked tend to escalate into larger ones over time. What might begin as a minor misalignment today could evolve into complete system failure tomorrow—necessitating extensive (and expensive) repairs or even full replacement. Regular maintenance and swift response to emerging issues ensure longevity and optimal performance of these heavy-duty doors while also managing costs effectively.

Environmental considerations also come into play with maintaining functional garage doors. Properly sealed and operational doors contribute significantly to energy efficiency within the facility by reducing drafts and maintaining stable internal temperatures. This not only helps in reducing utility bills but also supports broader sustainability goals many companies strive toward today.

Finally, there's the aspect of professionalism that reflects on business credibility when dealing with clients or partners who visit your premises frequently. Well-maintained facilities signal attention to detail and overall organizational competence—a crucial factor in building trust and long-term relationships.

In conclusion, timely repairs for commercial garage doors transcend mere mechanical fixes; they safeguard safety standards, uphold operational efficacy, prove financially wise in the long run, support environmental responsibility efforts, and maintain a professional image essential for any thriving business entity. Investing in regular inspections combined with immediate corrective actions forms the bedrock upon which uninterrupted industrial activities stand strong.

Posted by on

Posted by on

Posted by on

Posted by on

Posted by on

Tools and Equipment Needed for Emergency Repairs

When it comes to maintaining and repairing commercial garage doors, business owners often face a crucial decision: should they opt for do-it-yourself (DIY) methods or enlist the help of professional repair services? Each approach has its own set of advantages and disadvantages, making the choice dependent on various factors such as cost, expertise, time, and long-term reliability.

First and foremost, DIY repairs offer a significant appeal due to their cost-saving potential. For businesses operating on tight budgets or looking to minimize expenses wherever possible, tackling a

garage door issue themselves might seem like an attractive option. With countless tutorials available online and hardware stores providing the necessary tools and replacement parts, many minor repairs can be attempted without professional assistance. This hands-on approach empowers business owners by giving them control over the process while potentially avoiding hefty service fees.

However, saving money in the short term doesn't always translate into long-term benefits. Commercial garage doors are complex systems with numerous components that must work in harmony for optimal performance. Inexperienced individuals attempting repairs may inadvertently cause more harm than good. Improper handling or installation can lead to further damage, resulting in even higher costs down the line. Furthermore, safety is a significant concern; heavy doors and high-tension springs pose serious risks if not managed correctly. Injuries sustained during DIY attempts could far outweigh any initial savings.

On the other hand, professional repair services bring a wealth of experience and specialized knowledge to the table. Technicians are trained to diagnose problems accurately and execute repairs efficiently. They come equipped with industry-grade tools designed specifically for garage door maintenance—tools that most laypeople wouldn't typically have on hand. Additionally, professionals can identify underlying issues that may not be immediately apparent but could compromise door functionality in the future.

Time is another critical factor when considering commercial operations where every minute counts. A malfunctioning garage door can disrupt daily activities, leading to delays in deliveries or compromised security for valuable assets stored within the premises. Professional services typically offer quicker turnaround times compared to DIY efforts since technicians understand the urgency involved and often provide emergency repair options.

Moreover, reputable repair companies usually offer warranties for their work—a guarantee not available with self-repair attempts. These warranties ensure peace of mind knowing that if something goes wrong post-repair, additional costs won't fall solely on your shoulders.

In conclusion, while DIY commercial garage door repairs might initially seem like a cost-effective solution for budget-conscious businesses, they come with inherent risks related to safety, time efficiency, and long-term reliability. Professional repair services provide expertise that ensures proper diagnosis and swift resolution of issues while offering warranties for added security against future problems. Ultimately choosing between these two approaches depends on balancing immediate financial constraints against potential long-term gains in performance stability and operational continuity.





Step-by-Step Guide to Quick Fixes

Choosing the right repair service for commercial garage doors is a critical decision that can significantly impact your business operations. A malfunctioning garage door can lead to delays, security vulnerabilities, and potential safety hazards. Therefore, when selecting a repair service, several key considerations should guide your choice to ensure you receive reliable, efficient, and professional assistance.

First and foremost, experience and expertise are paramount. The complexities involved in commercial garage door systems require technicians who are not only skilled but also experienced with a variety of models and mechanisms. Look for companies that have been in the industry for several years and possess a proven track record of successful repairs. Experienced technicians are more likely to diagnose issues accurately and provide effective solutions swiftly.

Another crucial factor is the range of services offered. A reputable repair service should be well-versed in handling various types of repairs, from minor adjustments to major overhauls. They should also offer preventative maintenance programs to help extend the lifespan of your doors and prevent future breakdowns. Comprehensive service offerings indicate that the company is equipped to meet all your needs under one roof, saving you time and hassle.

The availability of emergency services is another important consideration. Commercial garage doors often operate continuously throughout the day, making them susceptible to unexpected failures at any hour. Ensure that the repair service you choose provides 24/7 emergency support so that you can minimize downtime and maintain seamless business operations regardless of when an issue arises.

Quality parts and materials used by the repair service should not be overlooked either. High-quality components ensure durability and optimal performance of your garage doors post-repair. Verify whether the company uses genuine parts from reputable manufacturers or substandard alternatives which might compromise functionality over time.

Customer reviews and testimonials also offer valuable insights into what you can expect from a prospective repair service provider. Positive feedback from other businesses indicates reliability, professionalism, and customer satisfaction while negative reviews may signal potential red flags about their services.

Cost-effectiveness is naturally an essential aspect as well; however, it's important not to base your decision solely on price alone. While obtaining multiple quotes helps compare rates within market standards – opting for unusually low-cost services could result in poor workmanship leading potentially higher costs down line due frequent repairs needed subsequently or even replacement sooner than

anticipated originally intended due subpar job done initially!

Lastly yet importantly - ensuring proper licensing insurance credentials maintained by selected firm protects against liabilities during process safeguarding interests involved parties alike thus peace mind knowing covered eventualities arise unexpectedly along way smoother sailing invariably follow thereafter without undue concerns cropping up unannounced suddenly disrupting flow events adversely impacting bottom line ultimately negatively affecting overall productivity margins could otherwise avoided entirely had prudent steps taken beforehand accordingly!

In conclusion selecting appropriate commercial garage door repairing agency encompasses evaluating multitude factors collectively contributing towards informed decision-making process aimed achieving satisfactory outcomes aligned specific requirements set forth respective scenarios envisaged thereby facilitating uninterrupted functioning operational premises seamlessly effectively efficiently ensuring smooth running affairs consistently maintained highest standards possible!

When to Call a Professional Technician

When it comes to maintaining the functionality and security of a commercial establishment, garage doors play a pivotal role. These robust structures ensure that goods are safely stored and accessible only to authorized personnel. However, like any mechanical system, commercial garage doors are susceptible to wear and tear over time. Understanding the cost factors involved in commercial garage door repairs can help business owners make informed decisions and budget accordingly.

One of the primary cost factors is the type of repair needed. Commercial garage doors consist of multiple components such as springs, cables, rollers, tracks, and openers. Each component has its own lifespan and susceptibility to damage. For instance, replacing a broken spring might be relatively inexpensive compared to repairing an entire track system that has been damaged due to prolonged use or an accident.

The material and size of the garage door also significantly impact repair costs. Commercial garage doors are often larger and more robust than residential ones because they need to accommodate frequent usage and heavier loads. Doors made from high-quality materials like steel or aluminum may have higher upfront costs but often prove more durable in the long run. Conversely, cheaper materials might save money initially but could lead to more frequent repairs.

Labor costs constitute another essential factor in determining overall expenses for commercial garage door repairs. Skilled technicians with experience in handling complex issues involving commercial-grade equipment tend to charge higher rates than those who specialize in residential repairs.

Additionally, emergency repairs or after-hours service calls can further escalate labor costs.

Geographical location also plays a role in influencing repair prices. In urban areas where the cost of living is higher, service providers may charge more compared to rural regions where overheads are generally lower. This variation can affect both parts pricing and labor charges.

Preventive maintenance should not be overlooked when considering long-term cost management for commercial garage doors. Regular inspections can identify potential problems before they escalate into major issues requiring expensive repairs or replacements. Investing in routine maintenance can extend the life of the door system while minimizing unexpected downtimes that could disrupt business operations.

Lastly, warranty coverage on parts and services is another significant consideration. Some manufacturers offer extended warranties on their products which can cover certain types of repairs within a specified period at no additional cost—providing peace of mind for business owners concerned about future expenses.

In conclusion, several factors contribute to the overall cost associated with repairing commercial garage doors including the type of repair needed; material quality; labor charges; geographical location; preventive maintenance practices; and available warranties on parts/services purchased initially by businesses themselves! By understanding these variables better ahead-of-time planning becomes easier allowing companies greater control over budgets ensuring smooth uninterrupted operation throughout day-to-day activities essential success enterprise itself!

Preventative Measures to Avoid Future Emergencies

****Maintenance Tips to Prevent Future Problems in Commercial Garage Door Repair****

Commercial garage doors are indispensable assets for businesses, providing security and ease of access. Ensuring their optimal functionality is crucial to avoid disruptions that could impede operations or compromise safety. Regular maintenance can prevent future problems and extend the life of your commercial garage door. Here are some essential tips to keep these robust systems running smoothly.

****Regular Inspections****

The cornerstone of any maintenance routine is regular inspection. Monthly checks can identify issues

before they become severe. Look for signs of wear and tear on springs, cables, rollers, and other moving parts. Pay special attention to any unusual noises or jerky movements during operation; these may indicate underlying problems that need immediate attention.

****Lubrication****

Proper lubrication is vital for the smooth operation of your commercial garage door. Apply a high-quality silicone-based lubricant on all moving parts, including hinges, rollers, and tracks at least twice a year. Avoid using grease as it attracts dirt and debris which can cause more harm than good in the long run.

****Balance Testing****

An unbalanced door puts undue stress on the opener and other components, leading to premature wear or failure. To test balance, disconnect the opener by pulling the release handle (usually a red cord) and manually lift the door halfway up. If it stays in place without assistance, it's balanced correctly; if not, adjustments are needed by a professional technician.

****Tightening Hardware****

Given their frequent use in commercial settings, garage doors undergo substantial vibration which can loosen hardware over time. Inspect bolts and brackets regularly and tighten them as necessary using appropriate tools. Loose hardware not only affects performance but also poses safety risks.

****Safety Features Check****

Modern commercial garage doors come equipped with various safety features like auto-reverse mechanisms and photo-eye sensors designed to prevent accidents. Test these features periodically by placing an object (like a broomstick) in the path of the closing door or blocking one of the sensors with an item like cardboard. The door should reverse immediately upon detecting an obstruction; if it doesn't, immediate professional intervention is required.

Commercial garage door repair - radio receiver

1. brand
2. emergency
3. natural rubber

****Cleaning Tracks****

Dusty or obstructed tracks can hinder smooth operation and even lead to derailment over time. Clean tracks regularly using a damp cloth to remove grime buildup while ensuring they are aligned properly during inspections.

By adhering consistently to these maintenance tips — conducting regular inspections, ensuring proper lubrication, testing balances periodically along with tightening loose hardware frequently besides checking operational safety features routinely alongside cleaning trackways meticulously — you'll significantly reduce potential repair costs while enhancing both longevity & reliability associated widely around efficient functioning attributed towards maintaining overall health within your invaluable investment concerning commercially utilized overhead entrances!

In conclusion: proactive care coupled alongside timely preventive measures ensures seamless continuity regarding business activities whilst safeguarding against unforeseen interruptions typically arising out due neglecting fundamental upkeep responsibilities!

Check our other pages :

- [Annual garage door inspection](#)
- [Broken panel replacement](#)
- [Garage door opener installation](#)
- [Garage door spring replacement](#)

Frequently Asked Questions

How quickly can you respond to a commercial garage door repair request in Manhattan, IL?

We strive to provide same-day service for emergency repairs and guarantee response within 24 hours for non-emergency situations.

Do you offer any warranties or guarantees on your commercial garage door repair services?

Yes, we offer a comprehensive warranty on both parts and labor for all our commercial garage door repair services, ensuring peace of mind and reliable performance.

Are your technicians certified and experienced in handling commercial garage doors specifically?

Absolutely. Our technicians are fully certified and have extensive experience specifically in repairing and maintaining commercial garage doors, ensuring high-quality service every time.

Overhead Door Company of Joliet

Phone : +18157256077

City : Joliet

State : IL

Zip : 60436

Address : 48 Meadow Ave

[Google Business Profile](#)

Company Website : <https://overheaddoorjoliet.com/>

USEFUL LINKS

[garage door repair near me](#)

[Manhattan garage door service](#)

[emergency garage door repair Manhattan](#)

[garage door spring repair Manhattan](#)

[best garage door repair Manhattan](#)

LATEST BLOGPOSTS

[garage door opener repair Manhattan](#)

[affordable garage door repair Manhattan](#)

[garage door track repair Manhattan](#)

[garage door cable repair Manhattan](#)

[commercial garage door repair Manhattan](#)

[Sitemap](#)

[Privacy Policy](#)

[About Us](#)

Follow us